



**INFRAGISTICS**  
DESIGN / DEVELOP / EXPERIENCE

# What's New / 2011.1 Data Visualization

JASON BERES : VP, Product Management  
jasonb@infragistics.com / @jasonberes / @infragistics

# Agenda

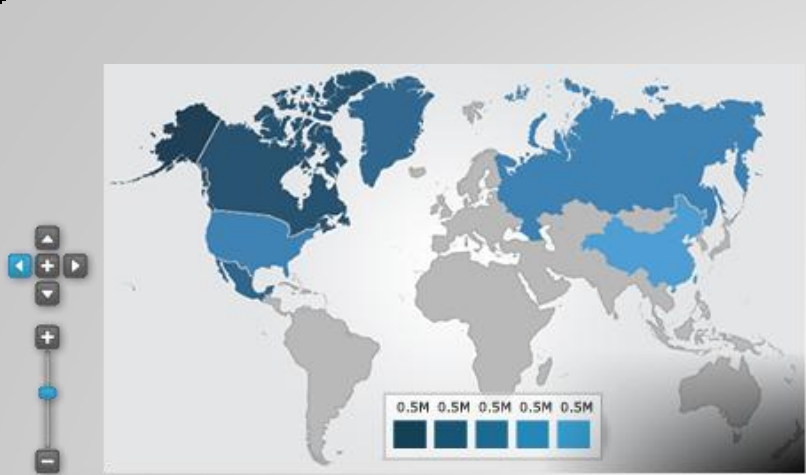
1 / 2011.1 Packaging

2 / Core Investments

3 / Shared XAML Strategy

4 / New Controls, Features & Frameworks

5 / Resources & Wrap Up



### IG | I EQUITY TRADING

Portfolio Manager

| Symbol                        | Quantity | Price Paid | Last Price | Net Liquid | P/L      | P/L %  | Timestamp  |
|-------------------------------|----------|------------|------------|------------|----------|--------|------------|
| Total: \$13,219,27 (\$191,42) |          |            |            |            |          |        |            |
| EBAY                          | 21       | \$28.99    | \$29.27    | \$614.67   | \$5.88   | 0.01%  | 12/02/2010 |
| GOOG                          | 10       | \$608.99   | \$631.43   | \$314.30   | \$224.40 | 0.04%  | 12/02/2010 |
| AMAT                          | 20       | \$13.31    | \$12.15    | \$243.00   | -\$29.20 | -0.09% | 12/02/2010 |
| INTC                          | 17       | \$20.24    | \$18.20    | \$309.40   | -\$34.68 | -0.1%  | 12/02/2010 |
| NWS                           | 21       | \$16.85    | \$14.90    | \$12.90    | -\$40.95 | -0.12% | 12/02/2010 |
| ADBE                          | 8        | \$29.46    | \$26.99    | \$215.92   | -\$19.76 | -0.08% | 12/02/2010 |
| PCAR                          | 17       | \$54.31    | \$54.09    | \$919.53   | -\$3.74  | 0%     | 12/02/2010 |
| CRST                          | 20       | \$68.08    | \$63.11    | 1,262.20   | -\$49.44 | -0.07% | 12/02/2010 |

Real-time Stocks

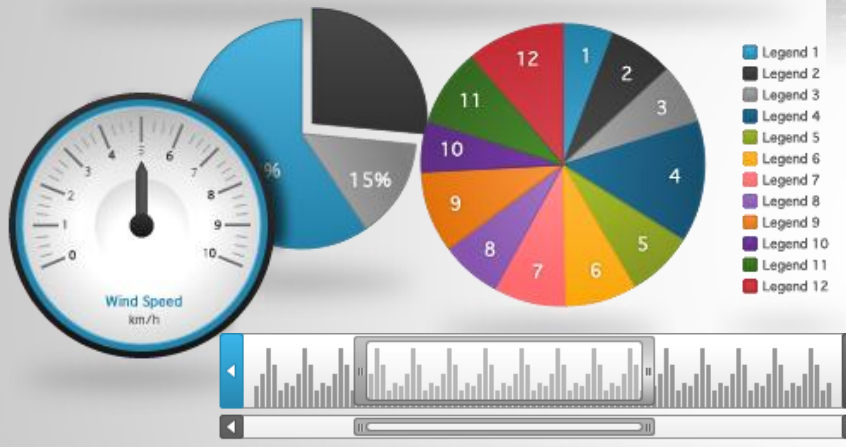
| Symbol | Open     | Daily Low | Bid      | Ask      | Last Trade Amount | Change  |
|--------|----------|-----------|----------|----------|-------------------|---------|
| AAPL   | \$317.99 | \$276.90  | \$289.91 | \$313.09 | 289.95            | \$4.57  |
| MSFT   | \$27.17  | \$24.10   | \$26.02  | \$27.65  | 26.09             | \$0.40  |
| ATVI   | \$11.73  | \$10.23   | \$10.56  | \$11.28  | 10.6              | -\$0.30 |
| ADBE   | \$29.50  | \$26.05   | \$26.96  | \$28.40  | 26.99             | -\$0.81 |
| AMZN   | \$169.35 | \$147.60  | \$169.42 | \$175.39 | 169.63            | \$8.14  |
| AMGN   | \$56.04  | \$49.31   | \$52.39  | \$53.48  | 52.44             | -\$2.25 |
| AMAT   | \$12.89  | \$11.31   | \$12.14  | \$12.58  | 12.15             | \$0.02  |
| ASML   | \$34.28  | \$29.88   | \$35.46  | \$35.57  | 35.47             | \$1.15  |
| ADP    | \$45.67  | \$40.49   | \$40.47  | \$43.82  | 40.49             | -\$2.32 |

Stock Analysis

Chart: MSFT 26.09

Trade History

| Account | Symbol | Quantity | Price Per She | Type | Timestamp  |
|---------|--------|----------|---------------|------|------------|
| 080228  | EBAY   | 21       | \$28.99       | Buy  | 12/02/2010 |
| 080228  | GOOG   | 10       | \$608.99      | Buy  | 12/02/2010 |
| 080228  | PCLN   | 21       | \$395.57      | Buy  | 12/02/2010 |
| 080228  | AMAT   | 20       | \$13.31       | Buy  | 12/02/2010 |
| 080228  | INTC   | 17       | \$20.24       | Buy  | 12/02/2010 |
| 080228  | CELG   | 14       | \$62.21       | Buy  | 12/02/2010 |
| 080228  | NWS    | 21       | \$16.85       | Buy  | 12/02/2010 |
| 080228  | ADBE   | 8        | \$29.46       | Buy  | 12/02/2010 |
| 080228  | MSFT   | 18       | \$27.83       | Buy  | 12/02/2010 |



Country: [Dropdown] Promotions: [Dropdown]

Reseller Order Count

Sales Territory: [Dropdown]

| Date.Day Name | Europe | EuropeTotal | All Sales |
|---------------|--------|-------------|-----------|
| Sunday        | 31     | 31          | 31        |
| Monday        | 29     | 29          | 29        |
| Tuesday       | 22     | 22          | 22        |
| Wednesday     | 8      | 8           | 8         |
| Thursday      | 22     | 22          | 22        |
| Friday        | 27     | 27          | 27        |

Analysis server data

Adventure Works DW 2008

Channel Sales

Reseller Sales

Drag fields between areas below:

Country: [Dropdown] Sales Territory: [Dropdown]

Promotions: [Dropdown] Columns: [Dropdown]

Date.Day Name: [Dropdown] Reseller Order Count: [Dropdown]

AUTO SALES DASHBOARD

| Region    | Q1      | Q2      | Q3      | Q4      | YTD     |
|-----------|---------|---------|---------|---------|---------|
| North     | 1000000 | 1100000 | 1200000 | 1300000 | 4600000 |
| South     | 900000  | 1000000 | 1100000 | 1200000 | 4200000 |
| West      | 800000  | 900000  | 1000000 | 1100000 | 3800000 |
| Midwest   | 700000  | 800000  | 900000  | 1000000 | 3400000 |
| Southwest | 600000  | 700000  | 800000  | 900000  | 3000000 |



Cross Platform Modern User Experience

# Packaging

a new way to buy / 9 awesome products / endless opportunities

# 2011 Packaging

All NetAdvantage for .NET products:

NetAdvantage for WPF

NetAdvantage for ASP.NET

NetAdvantage for Silverlight

NetAdvantage for Windows Forms



2 Data Visualization Products

NetAdvantage for WPF Data Visualization

NetAdvantage for Silverlight Data Visualization

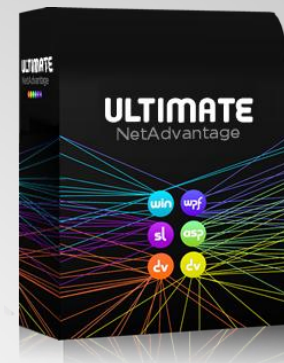


3 New Products

NetAdvantage for jQuery

NetAdvantage for Windows Phone (CTP)

NetAdvantage Reporting (CTP)



# Core Investments

## RIA Technologies & Desktop Development

- LOB Components for Microsoft Platforms
- Depth and Breadth on the XAML Platforms (Silverlight/WPF)
- Single code base for SAML components
- Performance, Ease of Use, Styling Quality.

**asp** NETADVANTAGE for ASP.NET

**wpf** NETADVANTAGE for WPF

**win** NETADVANTAGE for WINDOWS FORMS

**wp** NETADVANTAGE for WINDOWS PHONE

**icon** NETADVANTAGE ICONS

**jq** NETADVANTAGE for JQUERY

**sl** NETADVANTAGE for SILVERLIGHT

## UX Tools & Services

- Quince Pro- A private, secure and organized way to collaborate, communicate and cultivate private UX design libraries to ensure consistent user experiences across your team, department and company.
- Usability, User experiences are key differentiations driving business decisions.
- Customer satisfaction and branding are on par with product features that drive productivity.

**cs** SERVICES CONSULTING

**ts** SERVICES TRAINING

**rpt** NETADVANTAGE REPORTING

**Q pro** QUINCE pro DESIGN LIBRARIES

**Q** QUINCE PATTERNS BROWSER

## Data Visualization

- XAML Platforms
- Dashboards & Reporting
- Performance, Ease of Use, Styling Quality
- Help businesses make better decisions

**dv** NETADVANTAGE for SILVERLIGHT  
DATA VISUALIZATION

**dv** NETADVANTAGE for WPF  
DATA VISUALIZATION

## TestAdvantage

- Enterprise level testing capabilities
- Higher quality product through test automation
- Reduce the need for cost of manual testing
- Increase productivity with the time savings as the testing stage finishes faster

**ta** TESTADVANTAGE for WINDOWS FORMS  
for HP QuickTest Professional software

**ta** TESTADVANTAGE for WINDOWS FORMS  
for IBM Rational Functional Tester

# New Samples Browser

New Online and Installed Experience

Easier to Copy Code Snippets

Better Organization of Samples

**INFRA** GISTICS

NETADVANTAGE for SILVERLIGHT DATA VISUALIZATION

FEATURES & SAMPLES

**CONTROLS**

- BARCODES**  
Barcode  
Barcode Reader
- CHARTS**  
Bullet Graph  
**Data Chart**  
Gauge  
Org Chart  
Web Chart
- FRAMEWORKS**  
Drag & Drop Framework  
Infragistics Excel
- GRIDS**  
Pivot Grid

**APPLICATION SAMPLES**

- IGAuto
- IGFinance
- IGHospital
- IGTube
- InfraAir
- EarthQuake

**Data Chart**

Render Silverlight charts with millions of data points that are capable of millisecond updates, sparing nothing to achieve blazing speed. Enable heavy-duty data visualization and analysis on large volumes of data with high performance.

**KEY FEATURES**

**FEATURES LIST**

- Architecture
- Interaction
- Visual

**Over 50 Chart Types**

Category Series (Line, Spline, Column, Area, Spline Area, Step Line, Step Area, Range Area, Range Column, Waterfall)  
Polar Series (Polar Line, Polar Area, Polar Scatter, Polar Spline, Polar Spline Area)  
Radial Series (Radial Column, Radial Pie, Radial Area, Radial Line)  
Scatter Series (Scatter, Scatter Line, Scatter Spline, Bubble)

**CODE VIEW**

SELECT SAMPLE SOURCE FILE TO VIEW: BindingDataTypes.xaml

```
<navigation:Page x:Class="Infragistics.Web.SampleBrowser.SilverlightDV.Samples.DataChart.Data.BindingDataTypes"
xmlns="http://schemas.microsoft.com/winfx/2006/xaml/presentation"
xmlns:navigation="clr-namespace:Infragistics.Silverlight.SampleBrowser.Framework.Controls;assembly=Infragistics.Web.SampleBrowser.SilverlightDV.Samples.DataChart.Data"
xmlns:x="http://schemas.microsoft.com/winfx/2006/xaml"
xmlns:d="http://schemas.microsoft.com/expression/blend/2008"
xmlns:mc="http://schemas.openxmlformats.org/markup-compatibility/2006"
xmlns:ig="http://schemas.infragistics.com/xaml"
xmlns:igResources="clr-namespace:Infragistics.Web.SampleBrowser.SilverlightDV.Resources"
xmlns:local="clr-namespace:Infragistics.Web.SampleBrowser.SilverlightDV.Samples.DataChart.Data"
mc:Ignorable="d"
d:DesignHeight="400" d:DesignWidth="700">
<!-- ===== -->
<navigation:Page.Resources>
<ResourceDictionary>
<ResourceDictionary.MergedDictionaries>
<ResourceDictionary Source="/Infragistics.Web.SampleBrowser.SilverlightDV;component/Themes/IgTheme/IG.xaml" />
</ResourceDictionary.MergedDictionaries>
<igResources:DataChartStrings x:Key="Strings" />
</ResourceDictionary>
</navigation:Page.Resources>
<!-- ===== -->
<Grid x:Name="LayoutRoot"
Background="White">
<!--#BEGIN SNIPPET#-->
<!-- ===== -->
<ig:XamDataChart x:Name="xamDataChart" Margin="10,5,10,10" >
<!-- Refer to code behind for binding different data types to XamDataChart-->
<ig:XamDataChart.DataContext>
<local:collectionData />
</ig:XamDataChart>
</Grid>
```



# Cross Platform

stylability / ease of use / performance excellence

# Styles & Stylability

2011.1

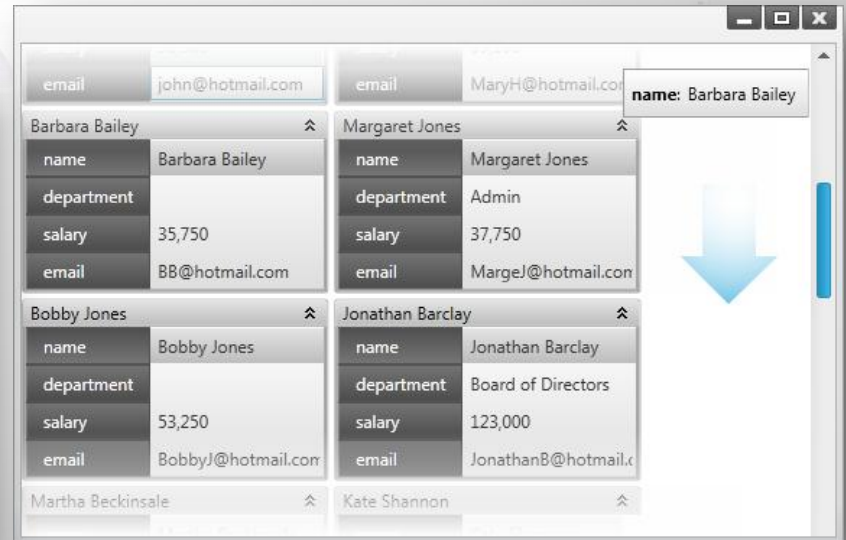
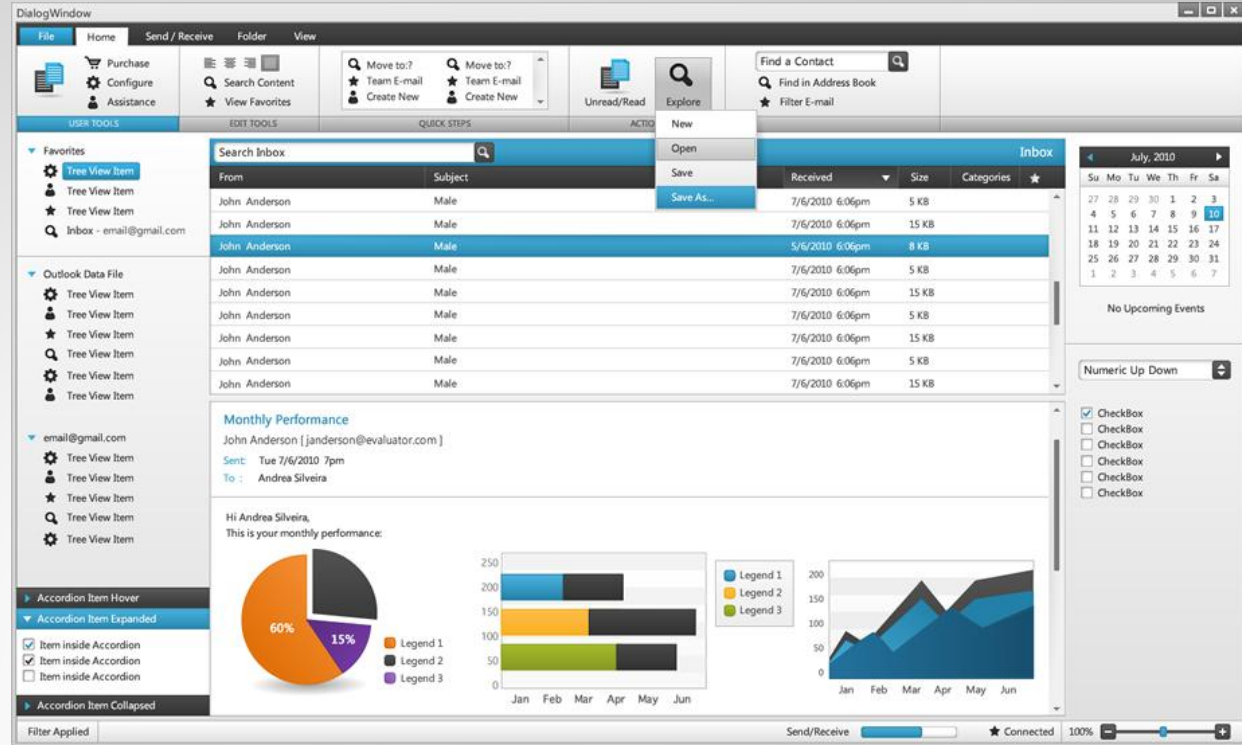
New IG Theme across all controls on all platforms

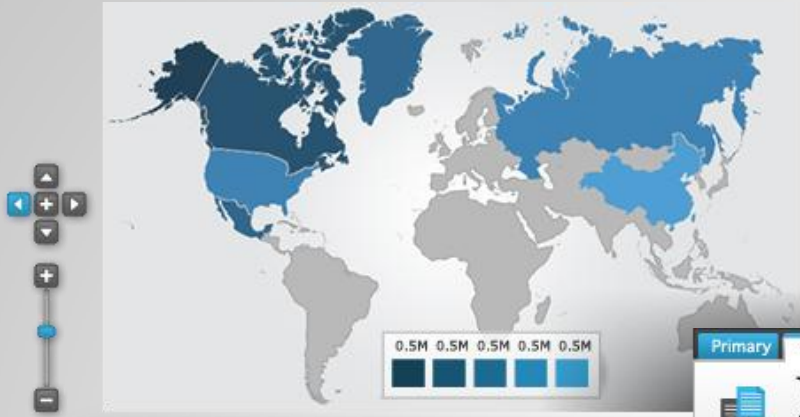
XAML

Windows Forms

ASP.NET

jQuery





Net Advantage (1000)  
 Community (1000) Blogs (2000)  
 Forum Samples (1000) Docs (3000)  
 Line of Business (1000)  
 Data Visualization (1000)

Primary Active Normal Hover Disabled Normal Normal

Purchase  
 Configure  
 Assistance

Search Content  
 Item Pressed

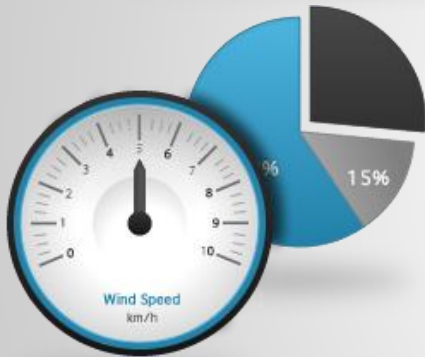
Search Content  
 View

USER TOOLS EDIT TOOLS DISAB

Mm/dd/yyyy

July, 2010

| Su | Mo | Tu | We | Th | Fr | Sa |
|----|----|----|----|----|----|----|
| 27 | 28 | 29 | 30 | 1  | 2  | 3  |
|    | 5  | 6  | 7  | 8  | 9  | 10 |
| 11 | 12 | 13 | 14 | 15 | 16 | 17 |
| 18 | 19 | 20 | 21 | 22 | 23 | 24 |
| 25 | 26 | 27 | 28 | 29 | 30 | 31 |
| 1  | 2  | 3  | 4  | 5  | 6  | 7  |



► Accordion Item Hover

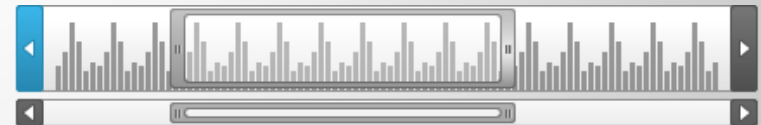
▼ Accordion Item Expanded

Item inside Accordion

Item inside Accordion

Item inside Accordion

► Item Collapsed / Normal



# Continued Performance Leadership

Market leading performance in data grid, data chart, and new controls in binding, rendering, scrolling, and virtualization in:

- Silverlight
- WPF
- ASP.NET
- jQuery

More than 1 million data points render in less than 3 milliseconds in XAML Charting

Organizational Chart loads in more than 50,000 nodes in milliseconds.

High capacity load on demand XAML Tree View

jQuery Competitors 200% to 400% slower in sorting, filtering, loading, data binding in data grid.

The screenshot displays the xamTRADER application interface, which includes several key components:

- Account Information:** Account Number: 87451-9652-20364, Cash Value: \$854,541.41
- Watch List:** A table listing various stocks with columns for Symbol, Close, Last, Change, Bid, and Ask. Stocks include DJI, DDC, GSPC, MSFT, XOM, CSCD, and GM.
- Pending Orders:** A table showing orders that have not yet been executed, including Symbol, Price, Quantity, Type, Status, and Submitted date.
- Order History:** A table showing completed orders with columns for Symbol, Status, Submitted, Price, Quantity, Type, and Executed date.
- MSFT Live Chart:** A line chart showing the real-time price movement of Microsoft (MSFT) stock.
- IG II EQUITY TRADING:** A comprehensive trading interface with multiple panels:
  - Portfolio Manager:** A table listing portfolio holdings with columns for Symbol, Quantity, Price Paid, Last Price, Net Liqui, P/L, P/L %, and Timestamp.
  - Stock Analysis:** A panel for analyzing individual stocks, featuring a chart and a Heat Map.
  - Real-time Stocks:** A table showing the current market status of various stocks, including Open, Daily Low, Bid, Ask, Last Trade, Amount, and Change.
  - Trade History:** A table detailing individual trade executions with columns for Account, Symbol, Quantity, Price Per Sha, Type, and Timestamp.
- Additional Charts:** A large area at the bottom of the interface contains a detailed line chart with a shaded area underneath, likely representing volume or a specific performance metric over time.

# XAML

# Data

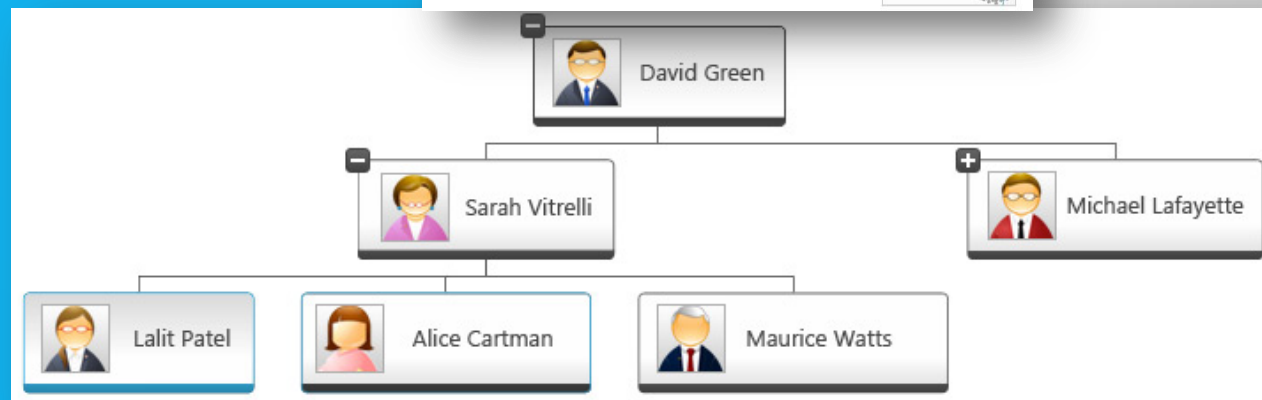
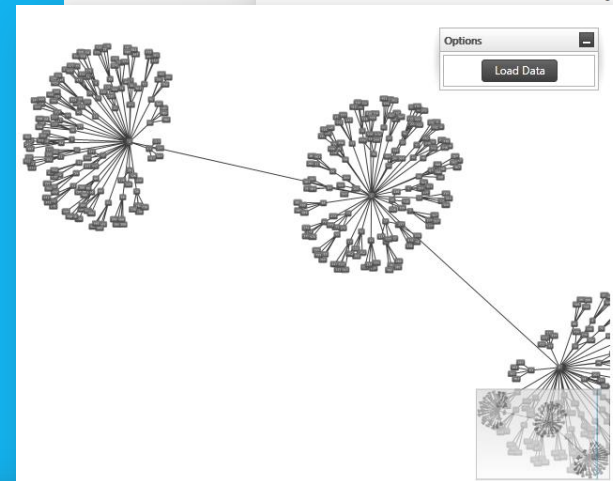
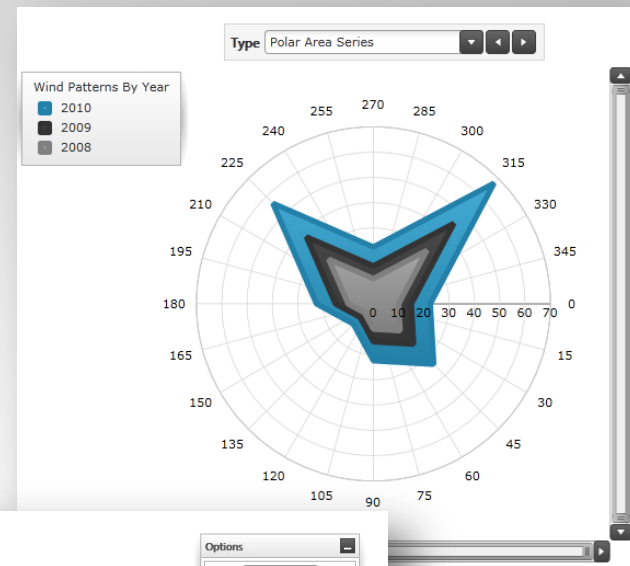
# Visualization

shared strategy / controls / ctp's / motion framework

# Shared XAML Strategy

Consistent API & XAML across new and existing Silverlight and WPF controls.

- New controls in WPF and Silverlight
- IG Theme across all controls
- Pivot Grid Enhancements
- Data Chart Enhancements



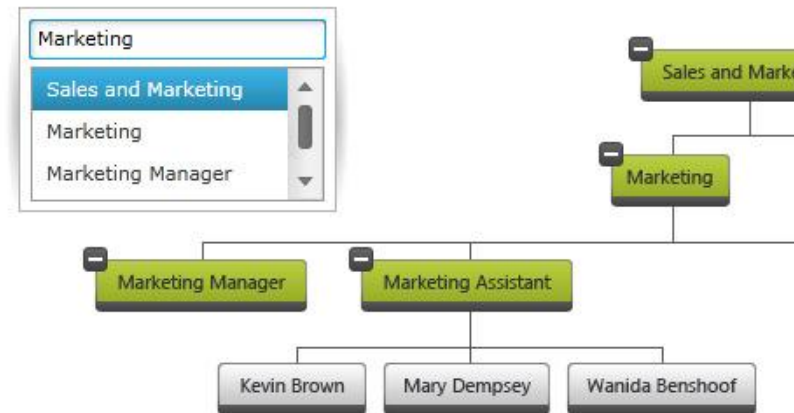
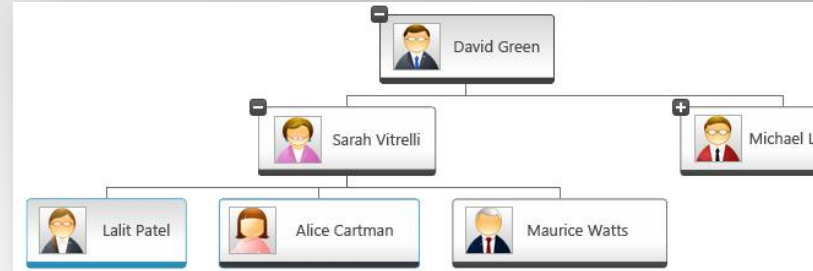
# Org Chart

## New Control

Make Sense of Organizations Visually

Create high performance, stylable organization charts that represent company, department, workgroup or other hierarchical structures

- High Performance Data Binding to over 50,000 entities
- Expand and Collapse Children
- Staggered or Orthogonal Layouts
- Highlight the Connections Between Employees
- Line Cap and Line Styling
- Custom Expansion Indicator
- Change the Levels of the Displayed Hierarchy with MaxDepth

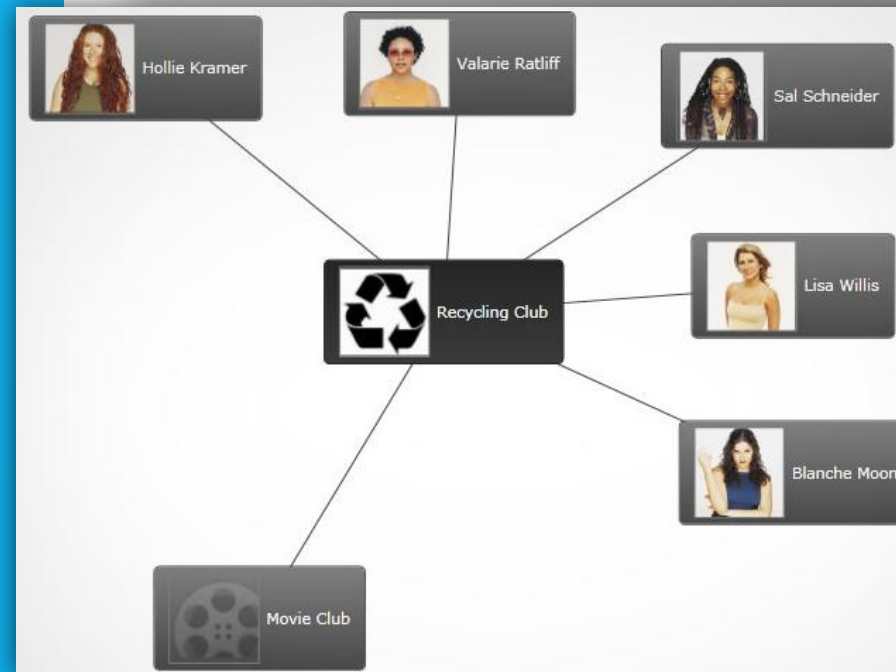
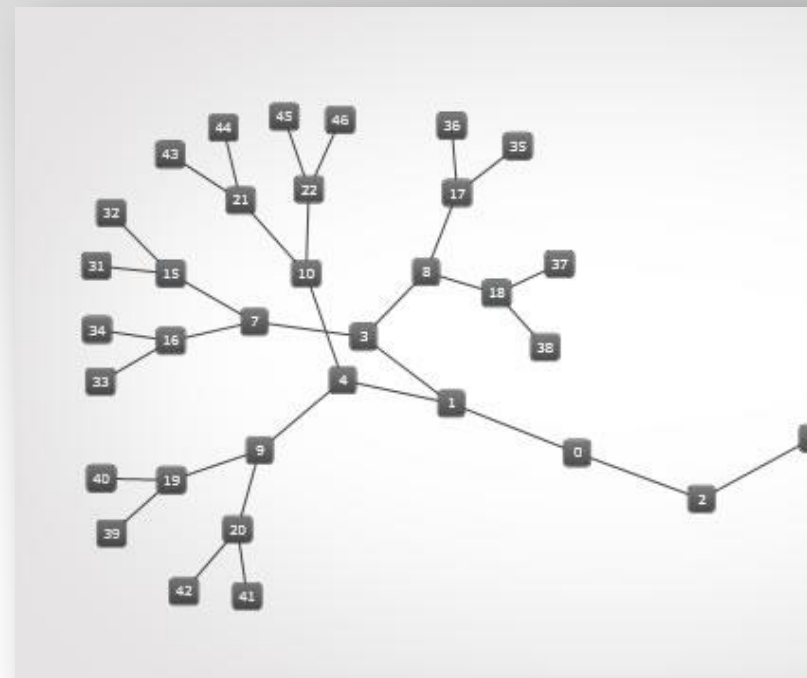


# Network Node Map

## New Control

Visualize relationships within a network - from biological systems, server infrastructures, email communication patterns, to complex social or professional networks.

- Load Graph Modeling Language (GML) Files
- Multiple Data Models
- Interactively Drag to Rearrange Nodes
- Retain the current selection during Multiple or Extended selection modes, Conditional Formatting Support
- Customize Node Templates





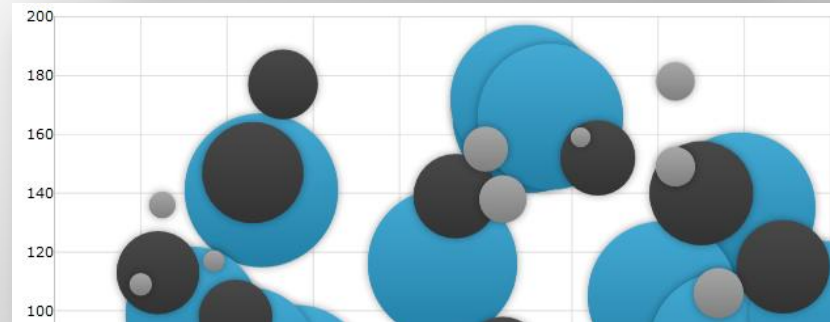
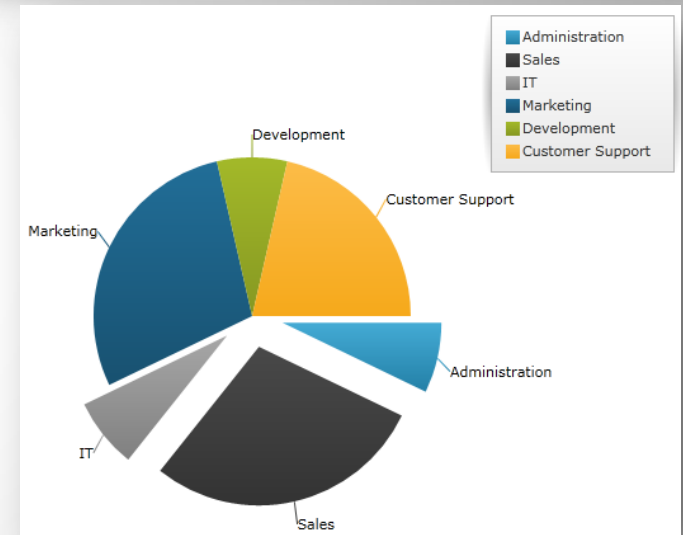
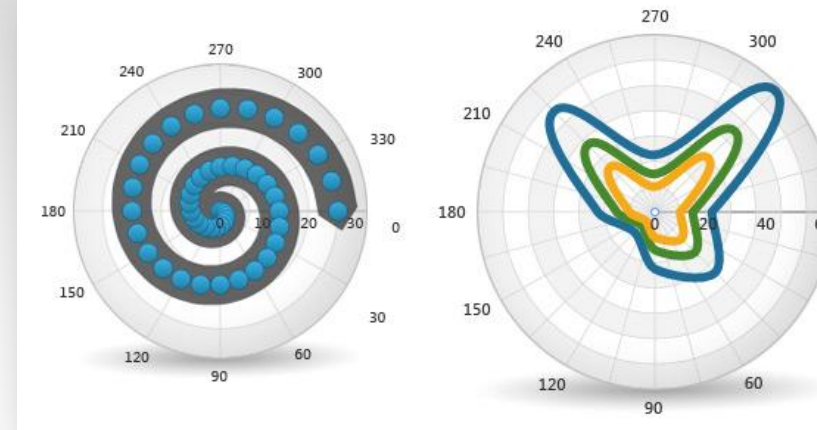
# Data Chart

New Chart types

New Chart formulas

Maintaining market  
leading performance

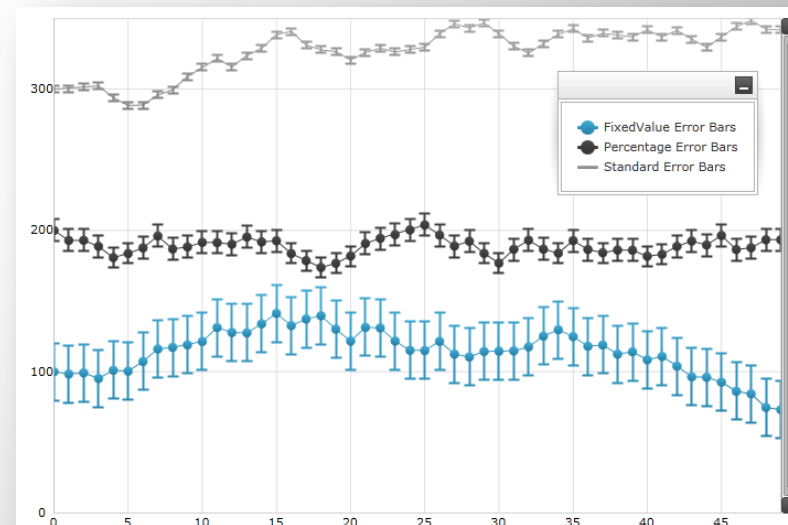
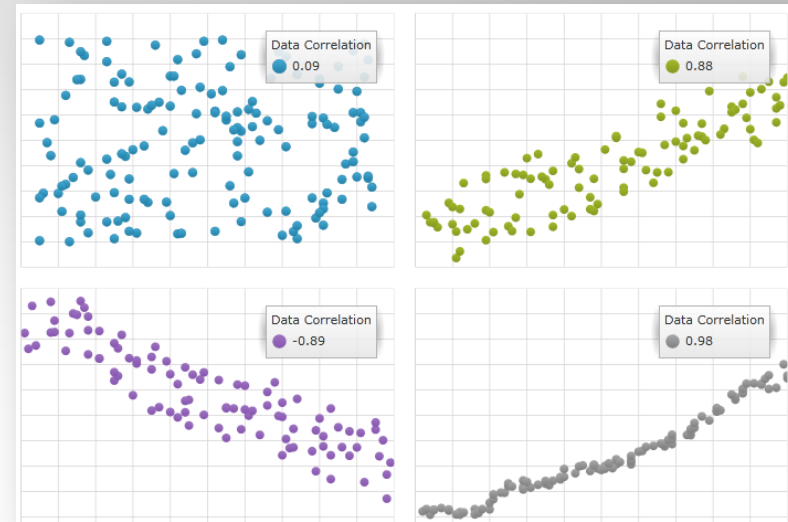
- Pie Chart
- New Chart Types
  - Bubble chart
  - Polar Scatter Series chart
  - Polar Spline Area Series
  - Radial Area Series
  - Radial Column Series
  - Radial Line Series
  - Radial Pie Series
  - Radial Series
- Formulas
  - Mean
  - Median
  - Variance
  - Logarithmic Time Scale



# Data Chart CTP's

Continued Investment

- Error Bars (CTP)
- New Chart Types
  - Bar chart (CTP)
  - Funnel (CTP)
  - Stacked 100 Bar (CTP)
  - Stacked 100 Column (CTP)
  - Stacked Bar (CTP)
  - Stacked Column (CTP)
- Formulas
  - Weighted Moving Average (CTP)
  - Correlation (CTP)



# OLAP Pivot Grid

Work with data (MDX)  
from your cubes, data  
warehouses from XMLA  
SAP and Oracle, or  
Microsoft® SQL Server®  
Analysis Services.

Feature Focus on  
Performance and End-  
User Properties

Large Amounts of  
Customer Feedback to  
Improve the OLAP Pivot  
Grid

- XMLA Oracle Data Provider
- Null Data support
- Live Data Updates
- Cell Editing
- Decoupling Dimension from Data Source
- Row and Column Hiding
- Display Valid Dimension Combinations in Column
- End User Dynamically Set Aggregate
- Sort Column Fields
- Expand / Collapse Group when +/- Clicked
- Specify Visibility of Measure / Dimension
- Removal of Row Field Sorting

Drop Filter Fields Here

| Amo       |                | Product      | Measures   |
|-----------|----------------|--------------|------------|
| Ci        |                | All products |            |
|           |                | Accessories  |            |
|           | Amount of sale | Units sold   | Unit price |
| Berlin    | \$168,850.00   | 3377         | \$50.00    |
| London    | \$205,850.00   | 4117         | \$50.00    |
| Mellville | \$185,950.00   | 3719         | \$50.00    |
| New York  | \$242,200.00   | 4844         | \$50.00    |

Drop Filter Fields Here

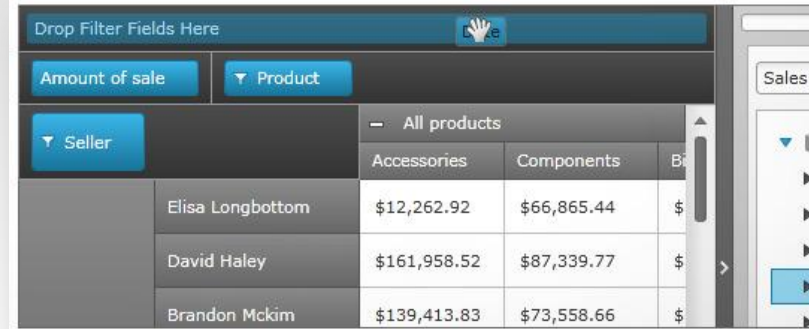
| Amount of sale      | Product      |              |              |             |
|---------------------|--------------|--------------|--------------|-------------|
| Seller              |              |              |              |             |
| All products        |              |              |              |             |
|                     | Accessories  | Bikes        | Clothing     | Components  |
| Alfredo Fetuchini   | \$83,926.16  | \$41,679.39  | \$17,170.48  | \$10,666.79 |
| Antonio Charbonneau | \$29,313.40  | \$22,584.03  | \$40,335.30  | \$29,350.00 |
| Benjamin Dupree     | \$55,683.61  | \$47,290.85  | \$61,115.21  | \$27,913.82 |
| Benjamin Meekins    | \$62,262.15  | \$34,430.41  | \$102,040.52 | \$32,256.29 |
| Brandon Mckim       | \$97,308.29  | \$36,645.06  | \$58,506.29  | \$46,359.80 |
| Bryan Culver        | \$68,472.94  | \$12,401.99  | \$102,652.31 | \$36,237.70 |
| Carl Costello       | \$8,893.56   | \$55,733.63  | \$60,535.59  | \$42,219.74 |
| Claudia Kobayashi   | \$127,315.13 | \$67,529.93  | \$51,352.86  | \$96,685.60 |
| David Haley         | \$119,592.81 | \$124,868.94 | \$76,583.33  | \$14,631.56 |
| Elisa Longbottom    | \$105,875.24 | \$62,032.51  | \$23,858.37  | \$22,255.37 |
| Glenn Landeros      | \$51,689.41  | \$64,171.12  | \$38,244.89  | \$68,572.69 |
| Harold Garvin       | \$25,330.44  | \$73,797.95  | \$116,961.14 | \$73,203.43 |

# Additional Features

Continued Investment  
in New Controls

Continued Investment  
in Existing Controls

- Infragistics Math Library
- UI Automation
- Drag & Drop Framework
- Barcode Reader
- Barcode Transform ECI Numbers to QR Code
- RadialGaugeRange to FrameworkElement
- WebChart Date Label Group
- WebChart Shift Left and Right Axis
- Needle Scale Inside Scale of Linear Gauge
- Localization
  - Spanish
  - French



Drop Filter Fields Here

Amount of sale | Product

Seller

| Seller           | All products |             |       |
|------------------|--------------|-------------|-------|
|                  | Accessories  | Components  | Bi... |
| Elisa Longbottom | \$12,262.92  | \$66,865.44 | \$    |
| David Haley      | \$161,958.52 | \$87,339.77 | \$    |
| Brandon Mckim    | \$139,413.83 | \$73,558.66 | \$    |



# Motion Framework

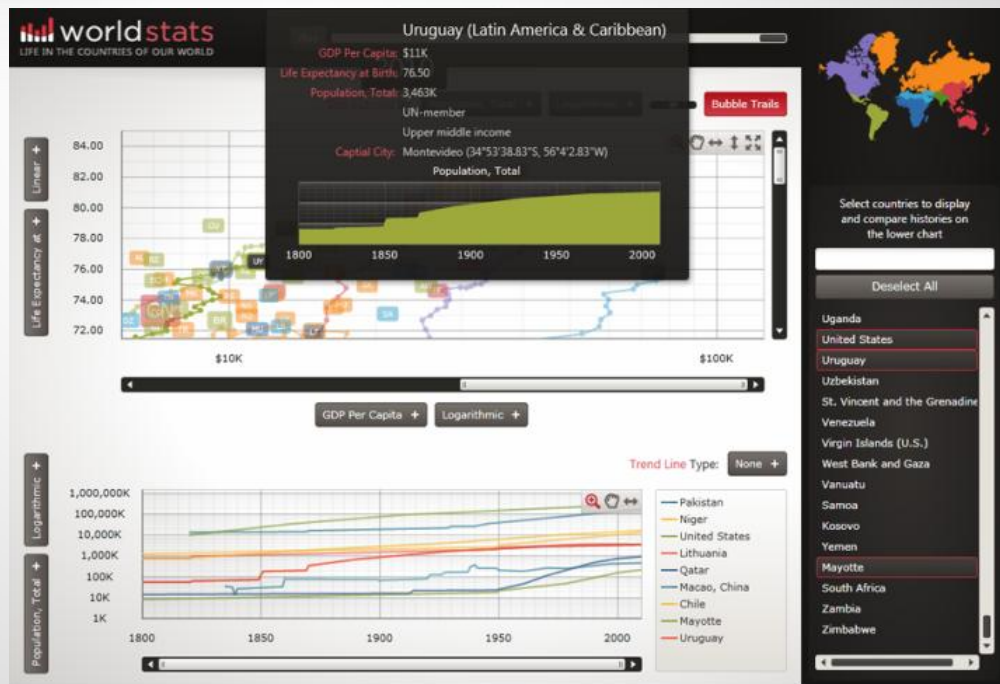
Animate the story of your data over time

Full documentation in 11.1

Use in Data Chart and Map

Reference Applications:

- World Stats(with full source code)
- World Maps



# Demo

new controls / new features / ctp features

# 2011.1 In Review

- 1 / Continued investment in existing products – major new controls like Org Chart, Network Node Map, Barcode Reader
- 2 / Styling even simpler with the new IG Theme
- 3 / Emphasis continues in the User Experience of 3 key areas (Ease of use, Performance, Styling)

# Resources

- <http://www.infragistics.com>
- <http://community.infragistics.com>
- <http://samples.infragistics.com>
- Follow me & Infragistics on Twitter  
@infragistics  
@jasonberes
- Additional questions –  
[jasonb@infragistics.com](mailto:jasonb@infragistics.com)





**INFRAGISTICS**  
DESIGN / DEVELOP / EXPERIENCE

**Thank You !!**